



Rose Nyirenda, Ministry of Health, Malawi

Government as a CLM partner: What's working, what's needed, what's next?

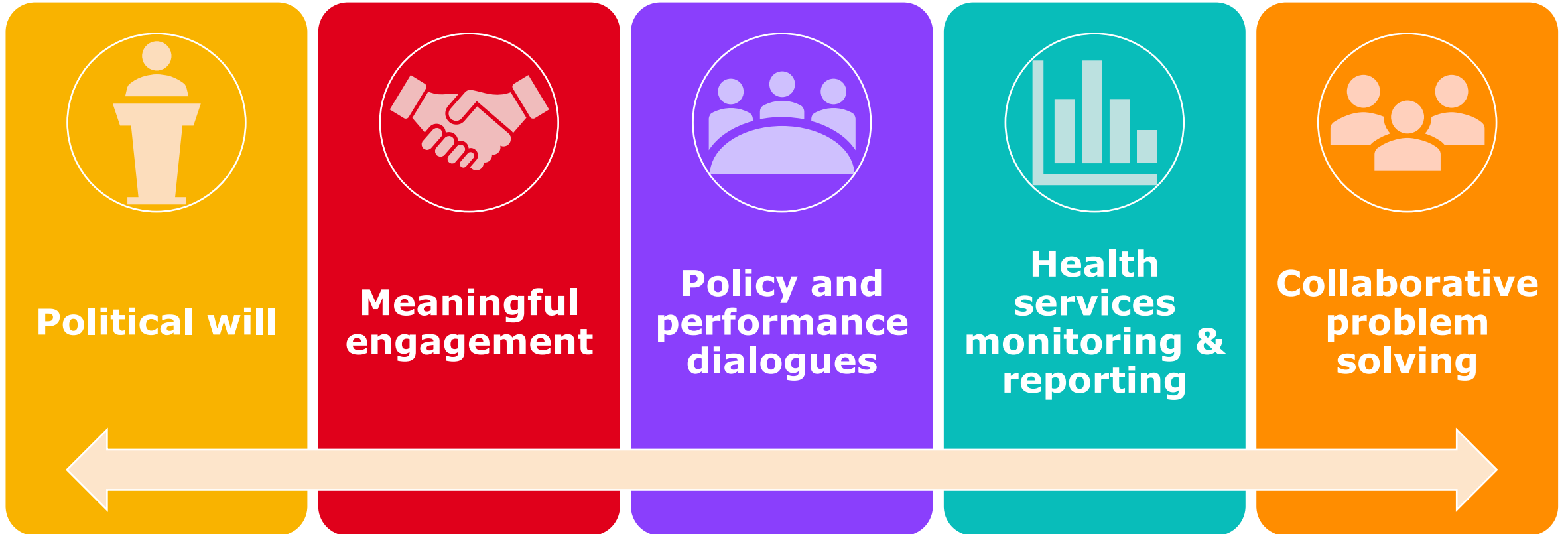
# CLM in Malawi: What's working, what's needed, what's next



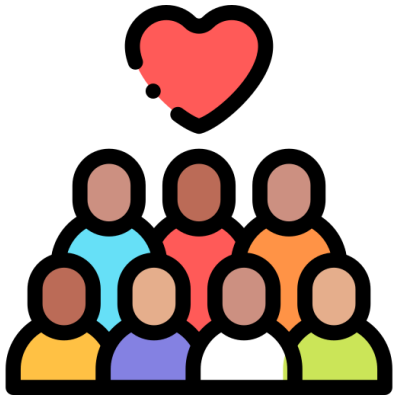
# What's working



 **AIDS 2024**

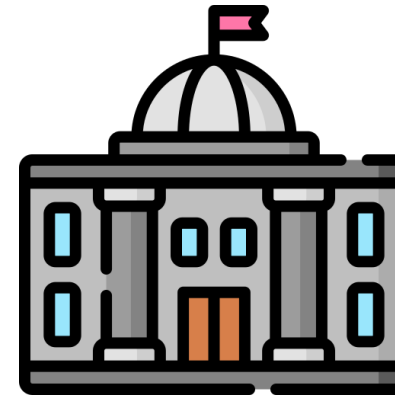


# What's needed



## Among communities

- Strengthening knowledge of government vision, policies, strategies and systems
- Shifting to a holistic focus, away from verticalization
- Holding members responsible and accountable for their health/ demand and uptake of services
- Increasing capacity in data for decision making
- Prioritizing advocacy



## Among government

- Increased engagement and implementation of reforms
- Capacitating duty bearers in CLM at all levels of the health care system

# What's next?



Supporting civil society leadership towards a broader and strategic focus (SDG 3 and beyond)



Ensuring government engages civil society beyond HIV, malaria and TB programming



Developing road maps collaboratively with actions and timelines based on CLM monitoring priorities



Supporting civil society to interface with their communities on priority health information through cost effective models